

Tokyo:

completed work, data acquisition,
analysis and workshops

Feb 25, 2015

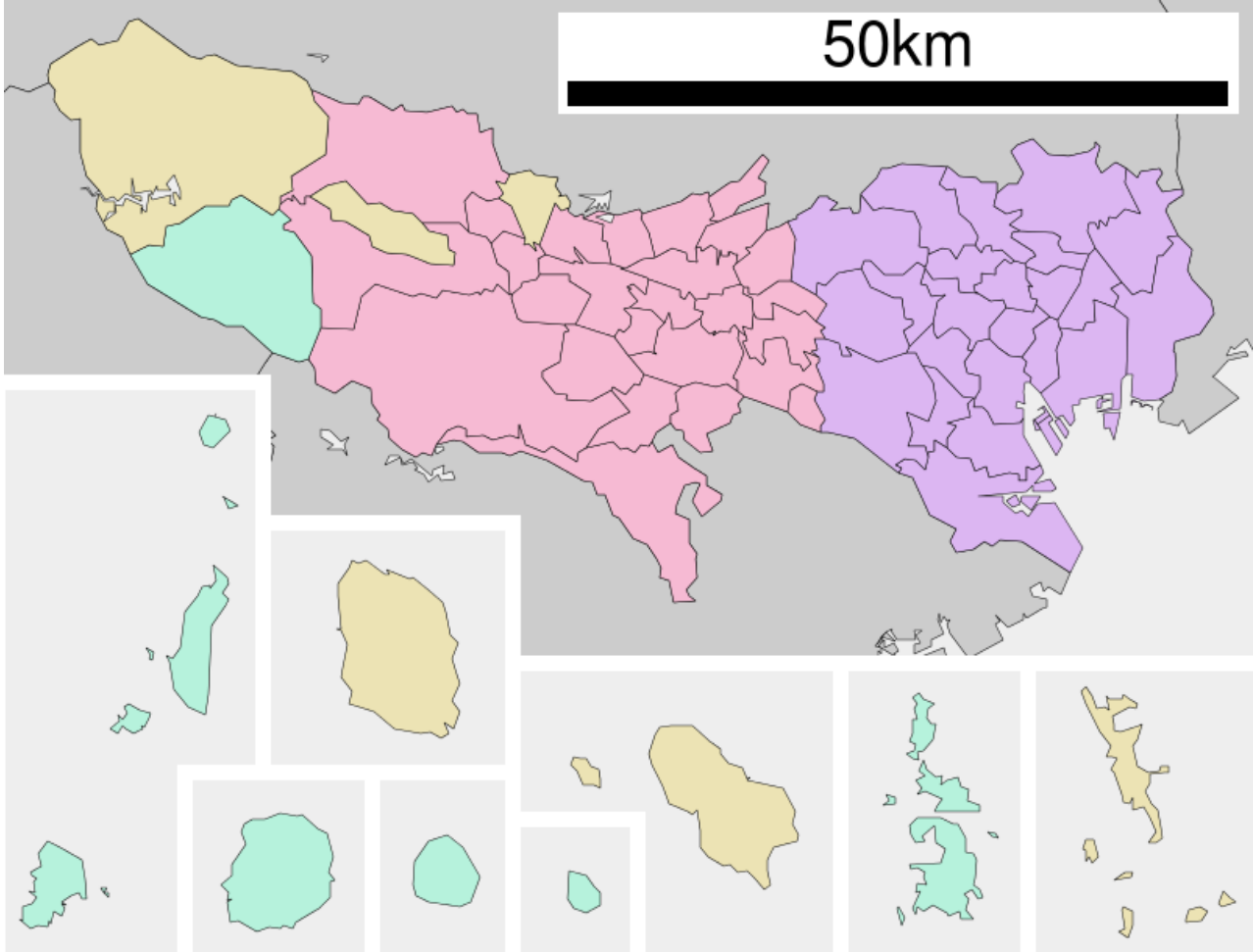
Steven Kraines

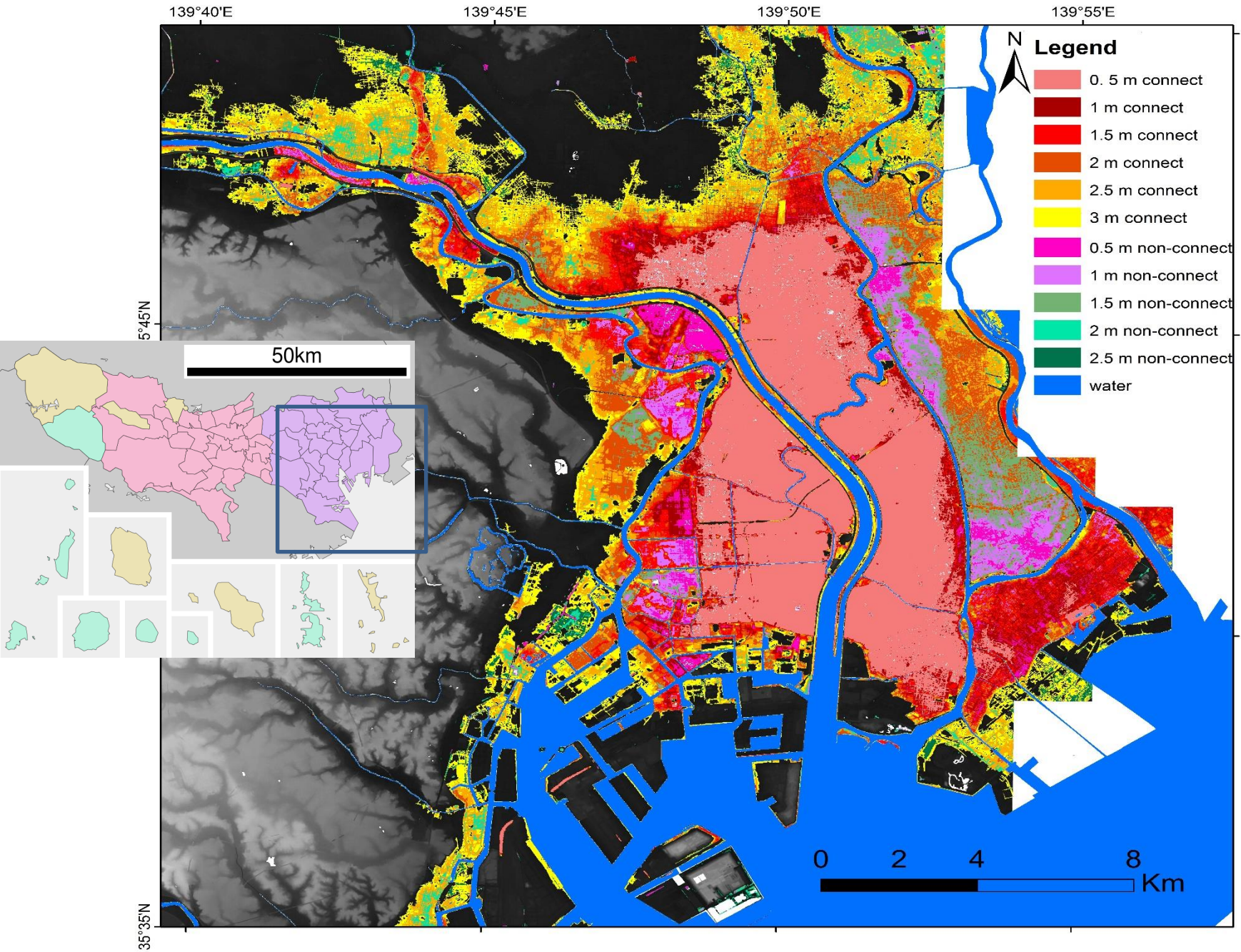
Ram Avtar

Yunus Ali Pulpadan

Masumi Yamamuro

Tokyo City versus Tokyo Region





Data Collected for UNU

		En	Jp
DEMOGRAPHY	A) Migrant population/short term migrants	✓	✓
	B) % of pupils whose first language is not English		
	number of tourist		rough number
	C) Dependency ratio		✓
	D) % people aged 3+ whose main language is not English		
	E) New migrant (NINo) rates		number of registered foreign nationals from 2010 to 2014
	F) 1 person Households >65y		✓
HEALTH AND NUTRITION	G) Obesity in Adults		✓
	H) HEALTH STATUS		✓

Data Collected for UNU

		En	Jp
POVERTY AND INCOME	I) Children in Poverty		child poverty rate in whole Japan
	J) Multiple Deprivation Rank of Average Score		
	K) Income Support claimant rate		✓
	L) % children in out-of-work families		% children in out-of-work families in whole Japan
	M) Percentage of People on Low Income		Please clarify the definition of "Low Income"
	N) ILO Unemployment rate		✓
	O) Youth Unemployment rate		✓
	P) Proportion of the working-age population who claim benefits (%)		✓
	Q) Employment rate		✓

Data Collected for UNU

		En	Jp
HOUSING AND NEIGHBORHOOD CONDITIONS	R) Overcrowded Households by Borough		✓
	S) Median House Price		✓
	T) London Happiness Scores		similar score does not exist in ward level, there are partial examples
GOVERNMENT AND AUTHORITIES	A) Crime rates per thousand population		crime number could be found
	B) Turnout at 2010 local elections (%)		✓

Data Collected for UNU

		En	Jp
MEDICAL SERVICES/DRR	C) % working-age with a disability		found the population of 18+ with disability in Tokyo, not found the population of 65+ or so with disability
ECONOMIC COVERAGE	D) Total Mean Gross Annual Pay (Income)		✓
SOCIAL NETWORKS	E) Volunteering Work Among Adults		✓
	F) Social Isolation: % of adult social care users who have as much social contact as they would like		
DRR STRATEGIES	G) Internet usage		✓

Data Collected for UNU

		En	Jp
EDUCATION AND RESEARCH	A) Proportion of working age people with no qualification		needs clarification of "qualification"
	B) Proportion of 16-18 years not in Employment, education or training		propotion of 15-34 years of NEET people was found
GENDER EQUITY	C) Gender parity in Annual gross pay (female-male)		✓
INVESTMENT	G) life expectancy		✓
ADAPTATION STRATEGIES/ AWARENESS	H) Household Waste Recycling Rate		not the number in household level, but the one in prefecture level

Data Collected for UNU

		En	Jp
ENVIRONMENTAL STATUS / ECOSYSTEM PROTECTION	D) % of people with access to open space		park is not equal to open space, however the propotion of non park open space is comparatively small, less than 10% of park area
	E) Environmental Footprint		number for whole Japan
	F) Net change in Street Trees		✓

		En	Jp
DEMOGRAPHY	A) Migrant population/short term migrants	✓	✓
	B) % of pupils whose first language is not English		
	number of tourist		rough number
	C) Dependency ratio		✓
	D) % people aged 3+ whose main language is not English		
	E) New migrant (NINo) rates		number of registered foreign nationals from 2010 to 2014
	F) 1 person Households >65y		✓
HEALTH AND NUTRITION	G) Obesity in Adults		✓
	H) HEALTH STATUS		✓
POVERTY AND INCOME	I) Children in Poverty		child poverty rate in whole Japan
	J) Multiple Deprivation Rank of Average Score		
	K) Income Support claimant rate		✓
	L) % children in out-of-work families		% children in out-of-work families in whole Japan
	M) Percentage of People on Low Income		Please clarify the definition of "Low Income"
	N) ILO Unemployment rate		✓
	O) Youth Unemployment rate		✓
	P) Proportion of the working-age population who claim benefits (%)		✓
	Q) Employment rate		✓
	R) Overcrowded Households by Borough		✓
HOUSING AND NEIGHBORHOOD CONDITIONS	S) Median House Price		✓
	T) London Happiness Scores		similar score does not exist in ward level, there are partial examples
GOVERNMENT AND AUTHORITIES	A) Crime rates per thousand population		crime number could be found
	B) Turnout at 2010 local elections (%)		✓
MEDICAL SERVICES/DRR	C) % working-age with a disability		found the population of 18+ with disability in Tokyo, not found the population of 65+ or so with disability
ECONOMIC COVERAGE	D) Total Mean Gross Annual Pay (Income)		✓
SOCIAL NETWORKS	E) Volunteering Work Among Adults		✓
	F) Social Isolation: % of adult social care users who have as much social contact as they would like		
DRR STRATEGIES	G) Internet usage		✓
EDUCATION AND RESEARCH	A) Proportion of working age people with no qualification		needs clarification of "qualification"
	B) Proportion of 16-18 years not in Employment, education or training		propotion of 15-34 years of NEET people was found
GENDER EQUITY	C) Gender parity in Annual gross pay (female-male)		✓
ENVIRONMENTAL STATUS / ECOSYSTEM PROTECTION	D) % of people with access to open space		park is not equal to open space, however the propotion of non park open space is comparatively small, less than 10% of park area
	E) Environmental Footprint		number for whole Japan
	F) Net change in Street Trees		✓
INVESTMENT ADAPTATION STRATEGIES/AWARENESS	G) life expectancy		✓
	H) Household Waste Recycling Rate		not the number in household level, but the one in prefecture level

Narrative possibilities

- Heat waves
 - Peak power supply (post Fukushima)
 - Heat island response measures
 - Hospital capacity issues
- Flood
 - Earthquake + Typhoon / Tsunami
- Combination
 - Flood knocks out power supply and transportation
 - Followed by heat wave

Stakeholder Workshops

- Preliminary/exploratory meetings
March 18-19 (Mark and Matthias)
- Workshop 1 in August 2015? At UNU?
- Workshop 2 one week later?
- Who will come from TRUC? Budget concerns

Stakeholder candidates

- Jun HAYAKAWA, Deputy Director, Seacoast Office
Water and Disaster Management Bureau
Ministry of Land, Infrastructure, Transport and Tourism  国土交通省
- Mr. Arata Ishihashi, Senior Researcher
Tokyo Metropolitan Research Institute for Environmental Protection
東京都環境科学研究所 調査研究科主任研究員 市橋 新
- Dr. Koji Dairaku, Senior Researcher
National Research Institute for Earth Science & Disaster Prevention
- Prof. Kaoru Takara
Innovative Disaster Prevention Technology and Policy Research Lab.
Division of Disaster Management for Safe and Secure Society
Disaster Prevention Research Institute
- Prof. Toshio Koike
Department of Civil Engineering,
School of Engineering, The University of Tokyo

Stakeholder candidates

- Bureau of Port and Harbor, Tokyo Metropolitan Government
- Waterfront Development Division
 - Development Planning Section
 - Land Management Section
 - Maintenance and Development Section
 - Marine Parks Section
- Port Planning and Construction Division
 - Construction Coordination Section
 - Planning Section
 - Technical Management Section
 - Port Facilities Construction Section



Stakeholder candidates

- Hospital administrators?
- Health care workers?
- Elderly home / care workers?
- Construction companies?
- Power sector? (TEPCO)
- Transportation sector? (Bill)
- Others? (Sue?)

Stakeholder candidates

- Concerns about accountability
- Language issues
- What can TRUC give to the stakeholders?